

Stock Information (As of March 31, 2021)

Shares of the Company and Major Shareholders

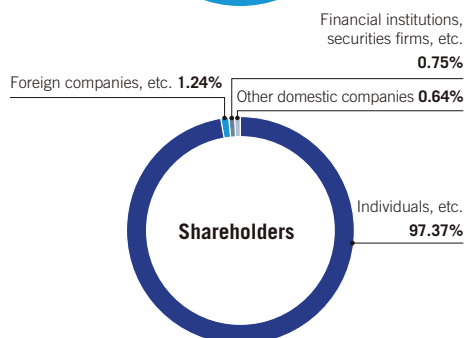
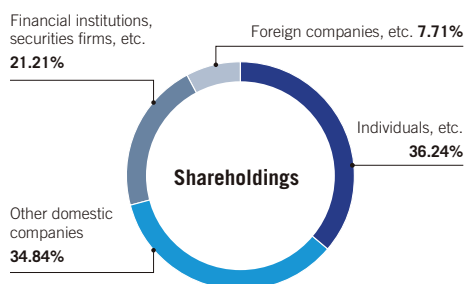
Shares of the Company

Securities code	2760
Number of authorized shares	25,600,000
Number of issued shares	10,445,500
Number of shareholders	7,757
Trading unit (Shares)	100

Major Shareholders

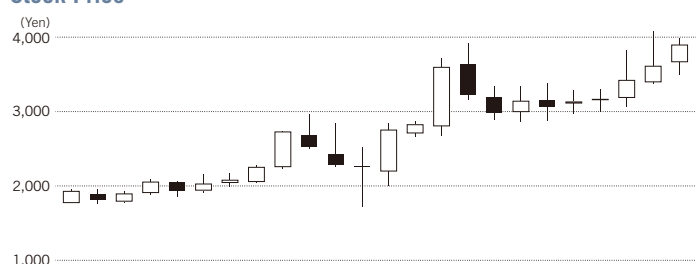
Shareholder	Number of shares held	Shareholding ratio (%)
Tokyo Electron Limited	3,532,700	33.82
The Master Trust Bank of Japan, Ltd. (Trust Account)	645,000	6.18
Tokyo Electron Device Employee Shareholder Association	505,309	4.84
Custody Bank of Japan, Ltd. (Trust Account)	427,100	4.09
The Nomura Trust and Banking Co., Ltd. (Tokyo Electron Device Employee Shareholder Trust Account)	214,900	2.06

Distribution of Shares, Stock Price and Trading Volume

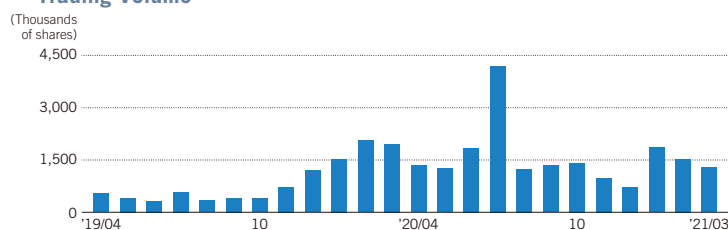


* "Individuals, etc." includes 316 treasury shares.

Stock Price



Trading Volume



Individual Investor IR Activities

In fiscal 2021, we held three online Company briefings for individual investors. We will continue to enhance our IR webpage as we strive to ensure the timely provision of information.



Tokyo Electron Device IR

Search



Note on forward-looking statements

This Investors Guide was prepared on July 1, 2021. Forward looking statements, including business strategies and business forecasts, were made by the Company's management, based on information available at that time, and may be revised due to changes in the business environment. Therefore, please be advised that the Company cannot guarantee the accuracy or the reliability of the statements. For the latest information, please refer to our information releases or our website. Note also that product and service names remain the trademarks of their respective owners.



IR Department

<https://www.teldevice.co.jp>

World Headquarters

Yokohama East Square, 1-4 Kinko-cho, Kanagawa-ku, Yokohama City, Kanagawa 221-0056, JAPAN

Tel. +81-45-443-4005

E-Mail: ir-info@teldevice.co.jp