

# Stock Information (As of March 31, 2020)

## Shares of the Company and Major Shareholders

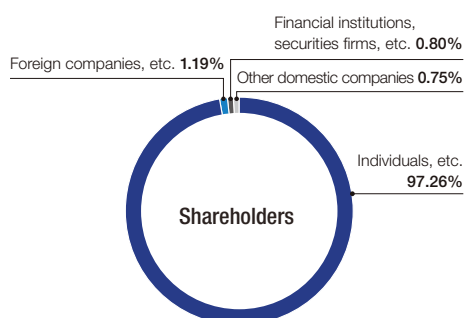
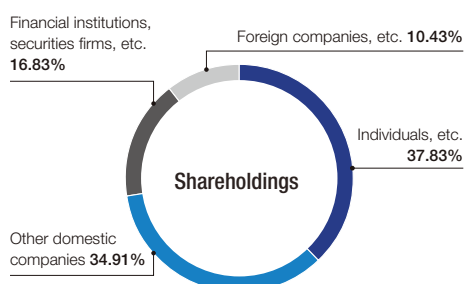
### Shares of the Company

|                             |            |
|-----------------------------|------------|
| Securities code             | 2760       |
| Number of authorized shares | 25,600,000 |
| Number of issued shares     | 10,445,500 |
| Number of shareholders      | 7,088      |
| Trading unit (Shares)       | 100        |

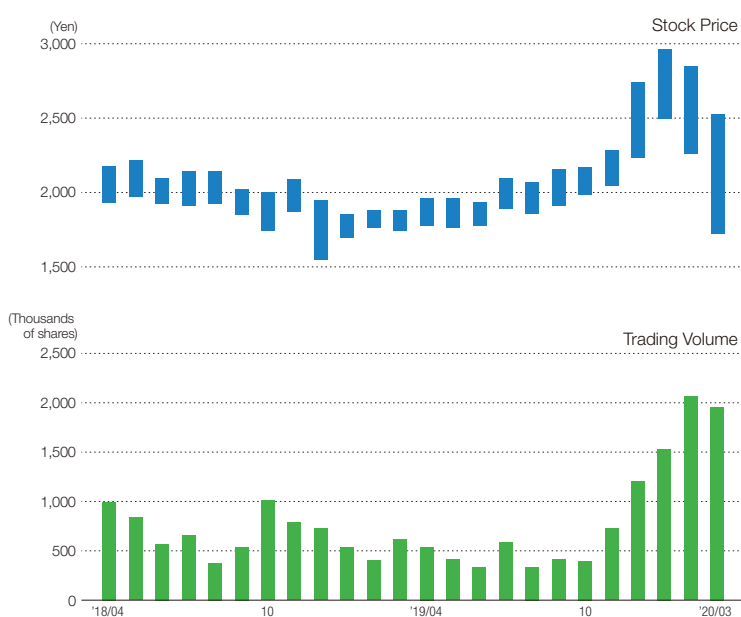
### Major Shareholders

| Shareholder   | Number of shares held | Shareholding ratio (%) |
|---|-----------------------|------------------------|
| Tokyo Electron Limited  | 3,532,700             | 33.82                  |
| Tokyo Electron Device Employee Shareholder Association  | 473,518               | 4.53                   |
| The Master Trust Bank of Japan, Ltd. (Trust Account)  | 376,700               | 3.61                   |
| The Nomura Trust and Banking Co., Ltd. (Tokyo Electron Device Employee Shareholder Trust Account) | 269,300               | 2.58                   |
| DFA International Small Cap Value Portfolio   | 208,200               | 1.99                   |

## Distribution of Shares, Stock Price and Trading Volume



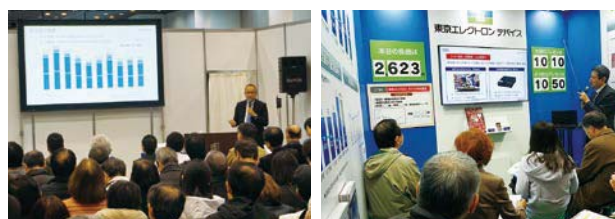
\* "Individuals, etc." includes 296 treasury shares.



### Individual Investor IR Activities

We participate in IR fairs for individual investors and conduct Company briefings. We also strive to ensure the timely provision of information, including business overviews and performance information, on the individual investors page of our corporate website.

<https://www.teldevice.co.jp/eng/ir/>



### Note on forward-looking statements

This Investors Guide was prepared on July 1, 2020. Forward looking statements, including business strategies and business forecasts, were made by the Company's management, based on information available at that time, and may be revised due to changes in the business environment. Therefore, please be advised that the Company cannot guarantee the accuracy or the reliability of the statements. For the latest information, please refer to our information releases or our website. Note also that product and service names remain the trademarks of their respective owners.



**TOKYO ELECTRON DEVICE LIMITED**

Corporate Communications Dept.  
<https://www.teldevice.co.jp>

#### World Headquarters

Yokohama East Square, 1-4 Kinko-cho, Kanagawa-ku, Yokohama City, Kanagawa 221-0056, JAPAN  
 Tel.+81-45-443-4005  
 E-Mail: [ir-info@teldevice.co.jp](mailto:ir-info@teldevice.co.jp)