

**Corporate Profile** (As of March 31, 2011)

Company Name: TOKYO ELECTRON DEVICE LIMITED  
 Established: March 3, 1986  
 Capital: ¥2,495.75 million  
 Employees: 880 (consolidated)



**World Headquarters**  
 1-4, Kinko-cho, Kanagawa-ku, Yokohama City, Kanagawa  
 221-0056, Japan

**Officers** (As of June 15, 2011)

<b>Corporate Director</b>		<b>Vice Presidents</b>	
Chairman of the Board	Toshiaki Sunagawa	Yasuyuki Kuriki	
President & Representative Director	Yasuyuki Kuriki	Noriyuki Kuga	
Senior Executive Vice President & Representative Director	Noriyuki Kuga	Tsutomu Kimura	
Corporate Director	Tsutomu Kimura	Katsuyuki Amano	
Corporate Director	Katsuyuki Amano	Atsushi Tokushige	
Corporate Director	Atsushi Tokushige	Hiroaki Shishikura	
Corporate Director	Tetsuro Higashi	Masayuki Ohsaki	
Corporate Director	Takashi Nakamura	Kohshi Yahata	
Corporate Director	Yoshifumi Iwata	Shuji Kuroda	
		Hideki Hayashi	
		Toshiyuki Ishizaki	
		Yasuo Hatsumi	
		Akihiro Kamikogawa	
<b>Corporate Auditor</b>			
Standing Corporate Auditor	Masunori Asano		
Standing Corporate Auditor	Hiroshi Takei		
Corporate Auditor	Kenichiro Hayashida		
Corporate Auditor	Masaaki Kawakatsu		

Notes: 1. Yoshifumi Iwata is an external director.  
 2. Kenichiro Hayashida and Masaaki Kawakatsu are external statutory auditors.

**Office Network** (As of July 1, 2011)

**Domestic Locations**

Headquarters  
 Yokohama Sales Departments 1 to 5  
 Omiya Branch Office  
 Nagoya Branch Office  
 Osaka Branch Office  
 Sendai Sales Office  
 Atsugi Sales Office  
 Nagaoka Sales Office  
 Mishima Sales Office  
 Kyoto Sales Office  
 Hiroshima Sales Office  
 Koriyama Satellite Office of the Omiya Branch Office (Koriyama City, Fukushima)  
 Sales Group 4 of the Omiya Branch Office (Utsunomiya City, Tochigi)

Shinjuku Office  
 Nagoya Office  
 Osaka Office  
 Tsukuba Sales Office  
 Engineering Center (Yokohama City)  
 Mito Sales Office  
 Tachikawa Sales Office  
 Matsumoto Sales Office  
 Hamamatsu Sales Office  
 Himeji Sales Office  
 Fukuoka Sales Office

**Overseas Locations**

Tokyo Electron Device (Shanghai) Limited  
 Tokyo Electron Device Hong Kong Limited  
 Tokyo Electron Device (Wuxi) Limited  
 Tokyo Electron Device Singapore Pte, Ltd.  
 Pan Electron Limited

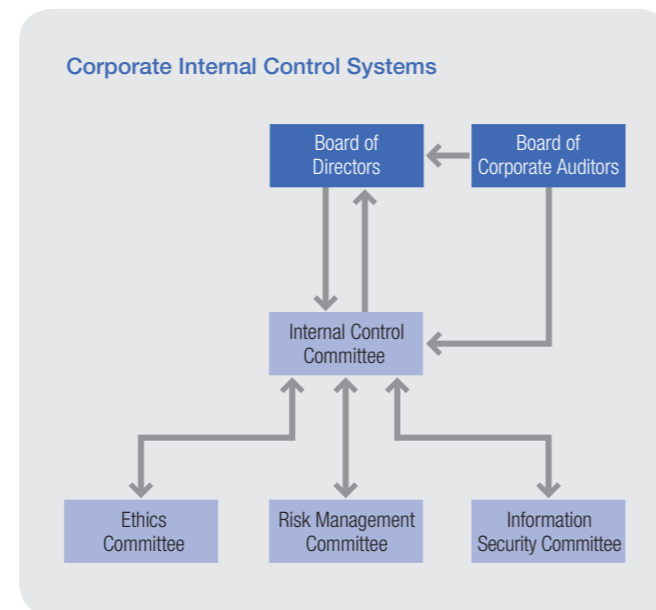


**Corporate Governance**

In light of the growing need for effective corporate governance, our top priority is to ensure fairness in management and to increase management transparency and accountability to shareholders and stakeholders. To this end, we have the following systems of internal control in place. Under the Internal Control Committee, which is tasked with strengthening and applying all internal control systems, the Ethics Committee is responsible for compliance systems, the Risk Management Committee is responsible for risk management systems, and the Information Security Committee is in charge of information storage and management systems.

In addition, the Board of Corporate Auditors makes proposals on internal control to the Board of Directors and also conducts audits of the Internal Control Committee.

Moving forward, we will continue our efforts to increase management fairness and transparency.



**Shares of the Company** (As of March 31, 2011)

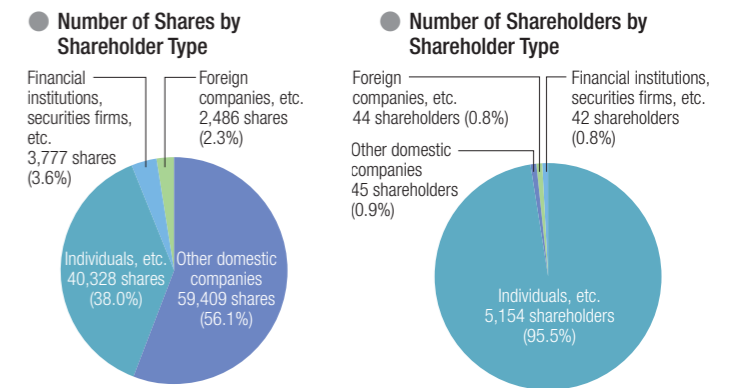
**Shares of the Company**

Number of authorized shares: 256,000 shares  
 Number of issued shares: 106,000 shares  
 Number of shareholders: 5,285 shareholders

**Major Shareholders**

Shareholders	Number of shares held	Shareholding ratio
Tokyo Electron Limited	58,753	55.4
Tokyo Electron Device Employee Shareholder Association	4,355	4.1
NORTHERN TRUST CO AVFC RE NORTHERN TRUST GUERNSEY NON TREATY CLIENTS	794	0.7
Japan Trustee Services Bank, Ltd. (Trust Account)	733	0.7
Kosaku Iyama	382	0.4

**Distribution of Shares**



**Stock Price and Trading Volume**

